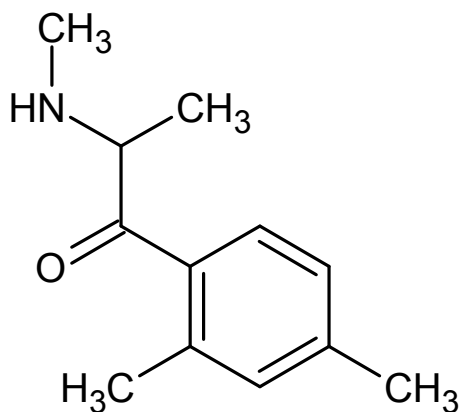




2,4-Dimethylmethcathinone

The Drug Enforcement Administration's Special Testing and Research Laboratory generated this monograph using structurally confirmed reference material.



1. GENERAL INFORMATION

IUPAC Name: 1-(2,4-dimethylphenyl)-2-(methylamino)propan-1-one

CAS#: Not Available

Synonyms: 2,4-DMMC

Source: DEA Reference Material Collection

Appearance: White powder (HCl)

UV_{max}(nm): Not Determined

2. CHEMICAL AND PHYSICAL DATA

2.1 CHEMICAL DATA

Form	Chemical Formula	Molecular Weight	Melting Point (°C)
Base	C ₁₂ H ₁₇ NO	191	Not Determined
HCl	C ₁₂ H ₁₇ NO · HCl	227	173.8



2,4-Dimethylmethcathinone

The Drug Enforcement Administration's Special Testing and Research Laboratory generated this monograph using structurally confirmed reference material.



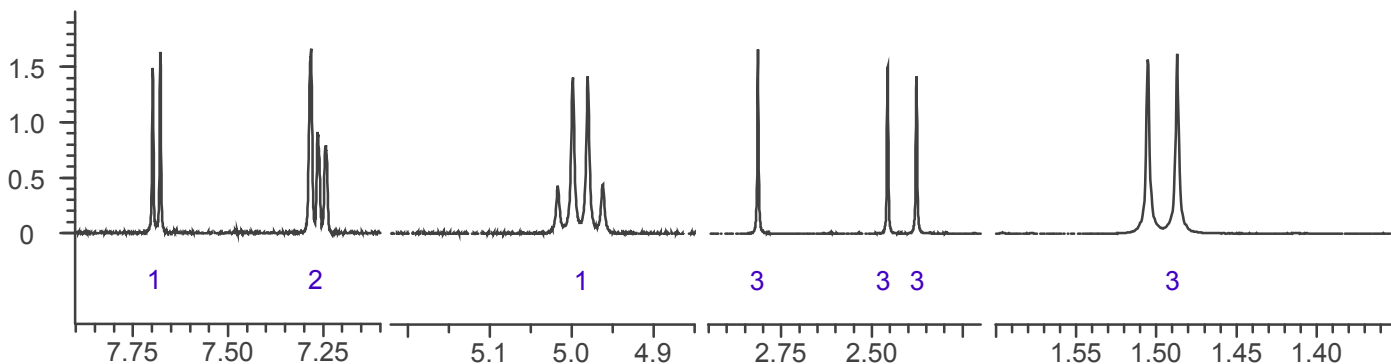
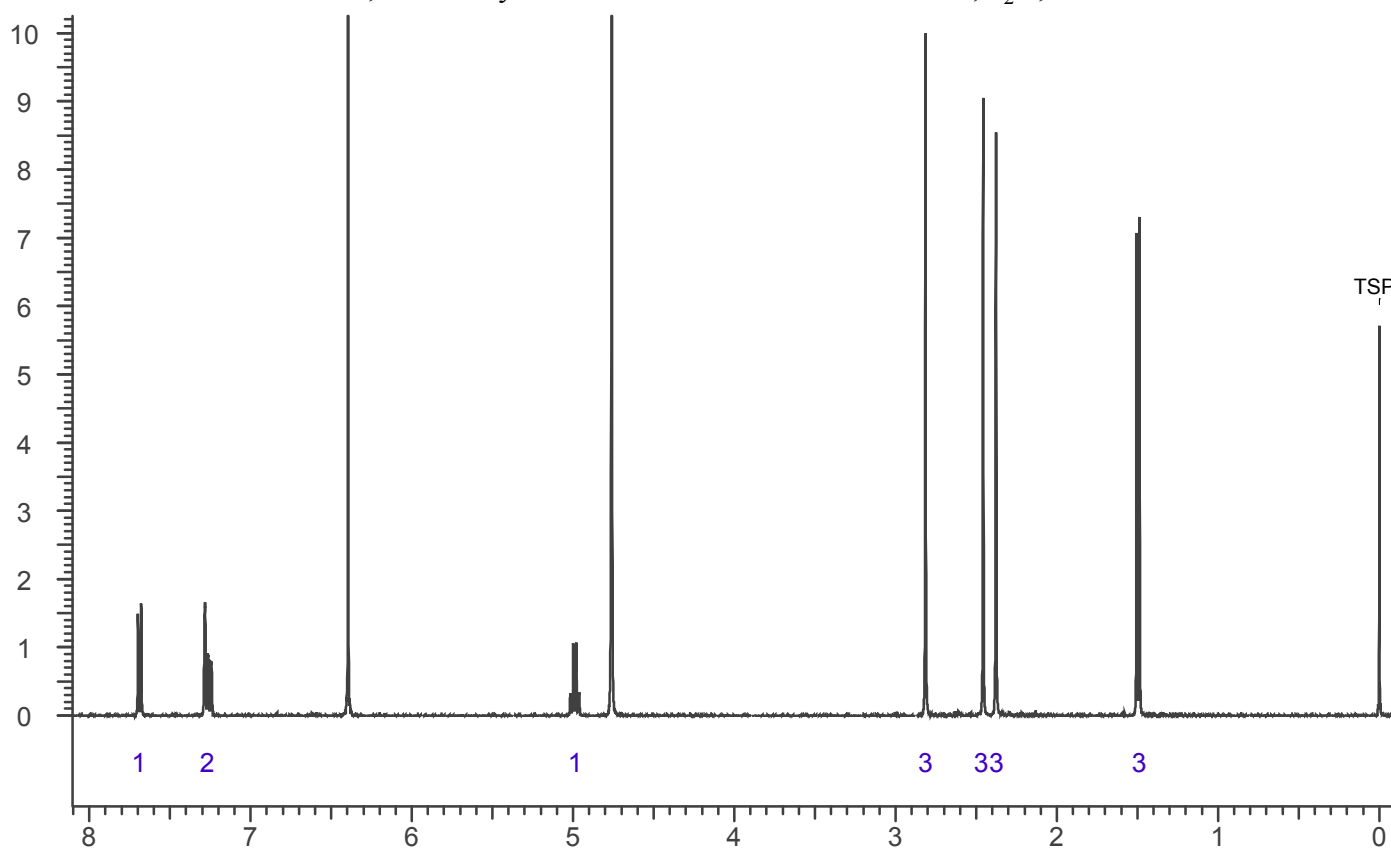
3. QUALITATIVE DATA

3.1 NUCLEAR MAGNETIC RESONANCE

Sample Preparation: Dilute analyte to ~5 mg/mL in D₂O containing TSP for 0 ppm reference and maleic acid as quantitative internal standard.

Instrument: 400 MHz NMR spectrometer
Parameters: Spectral width: at least containing -3 ppm through 13 ppm
Pulse angle: 90°
Delay between pulses: 45 seconds

¹H NMR 2,4-Dimethylmethcathinone HCl Lot N17-P92A, D₂O, 400MHz





2,4-Dimethylmethcathinone

The Drug Enforcement Administration's Special Testing and Research Laboratory generated this monograph using structurally confirmed reference material.



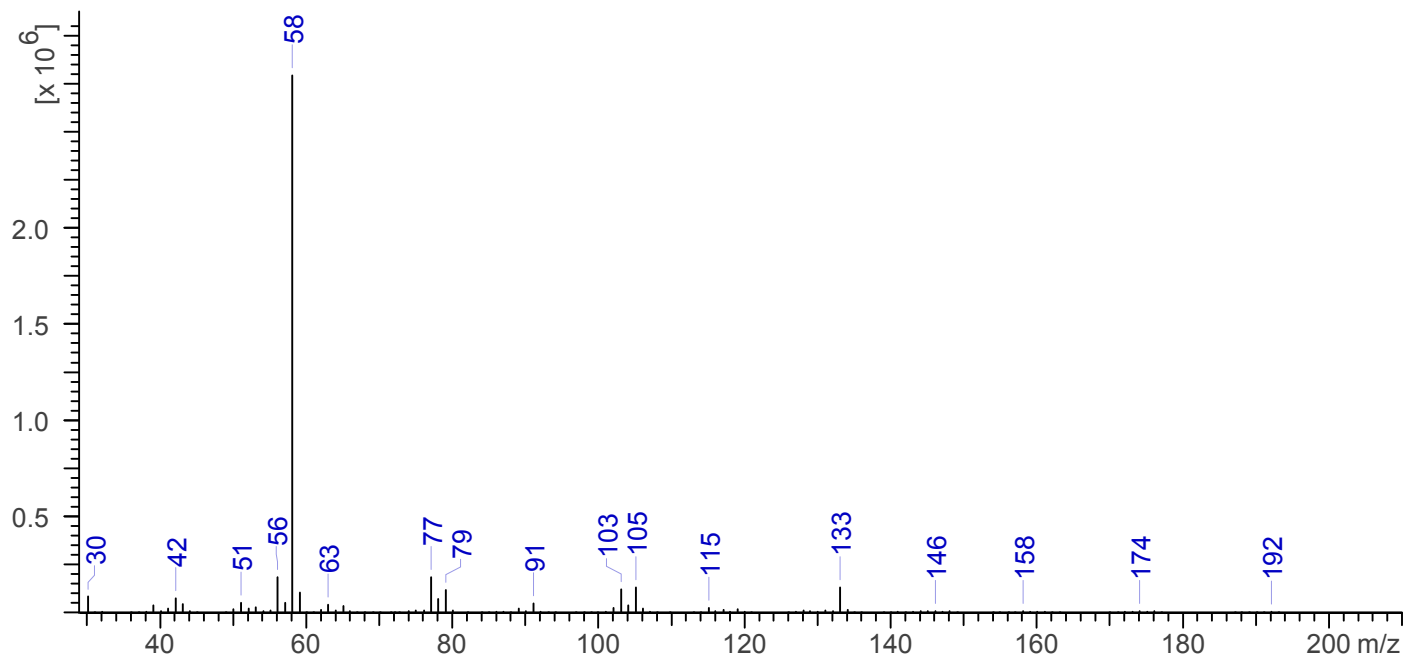
3.2 GAS CHROMATOGRAPHY/MASS SPECTROMETRY

Sample Preparation: Dilute analyte ~4 mg/mL base extracted into chloroform.

Instrument: Agilent gas chromatograph operated in split mode with MS detector
Column: DB-1 MS (or equivalent); 30m x 0.25 mm x 0.25 μ m
Carrier Gas: Helium at 1 mL/min
Temperatures: Injector: 280°C
MSD transfer line: 280°C
MS Source: 230°C
MS Quad: 150°C
Oven program:
1) 100°C initial temperature for 1.0 min
2) Ramp to 300°C at 12 °C/min
3) Hold final temperature for 9.0 min

Injection Parameters: Split Ratio = 20:1, 1 μ L injected
MS Parameters: Mass scan range: 30-550 amu
Threshold: 100
Tune file: stune.u
Acquisition mode: scan
Retention Time: 7.668 min

EI Mass Spectrum, 2,4-Dimethylmethcathinone HCl, Lot N17-P92A



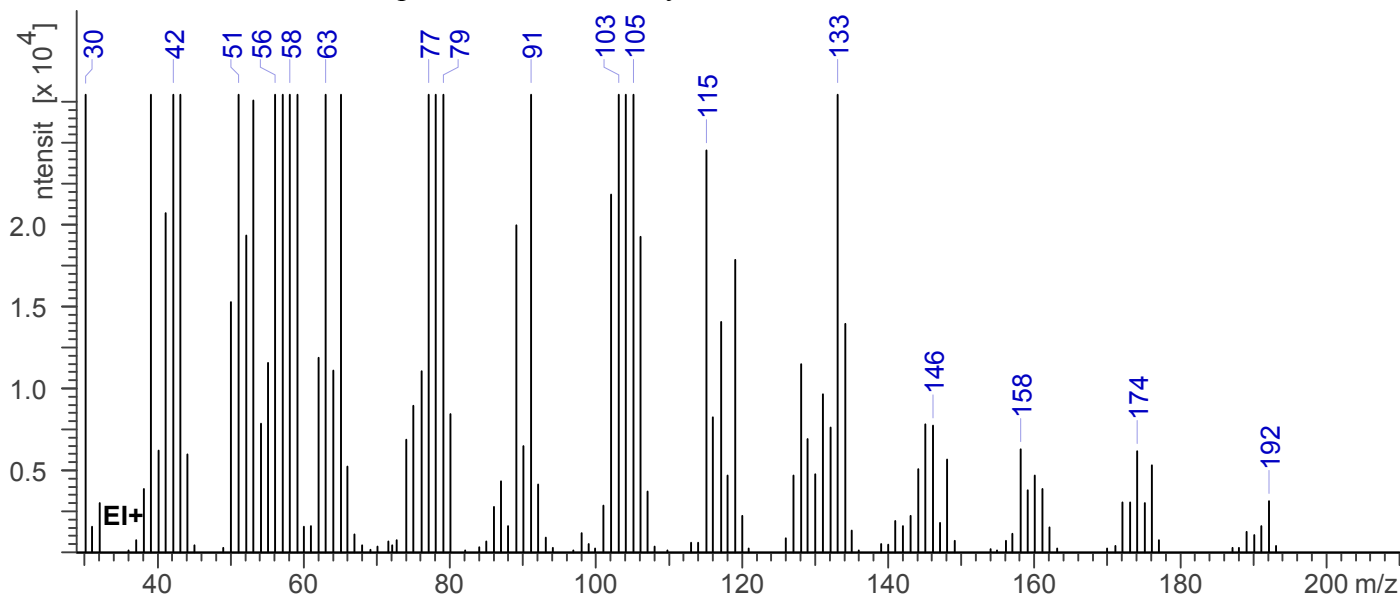


2,4-Dimethylmethcathinone

The Drug Enforcement Administration's Special Testing and Research Laboratory generated this monograph using structurally confirmed reference material.



EI Mass Spectrum, 2,4-Dimethylmethcathinone HCl, Lot N17-P92A

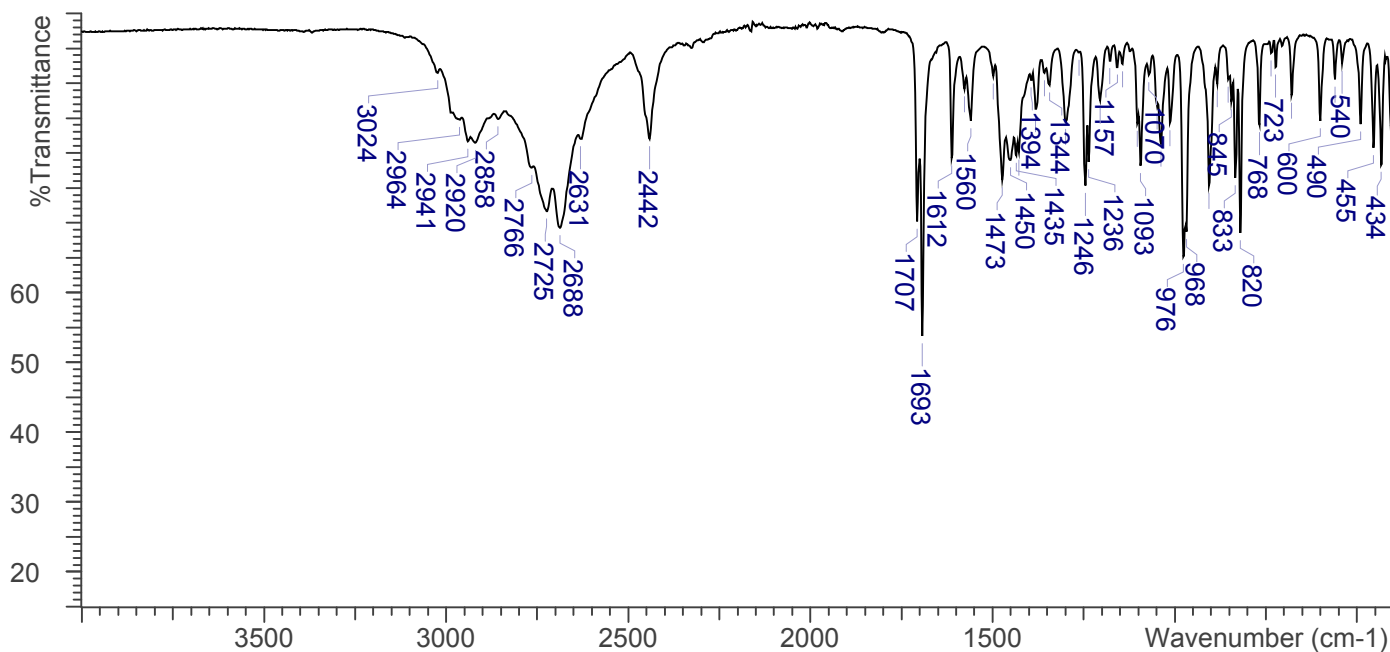


3.3 INFRARED SPECTROSCOPY (FTIR)

Instrument: FTIR with diamond ATR attachment (3 bounce)

Scan Parameters:
Number of scans: 32
Number of background scans: 32
Resolution: 4 cm⁻¹
Sample gain: 8
Aperture: 150

FTIR, ATR (Diamond, 3 Bounce) 2,4-Dimethylmethcathinone HCl Lot N17-P92A



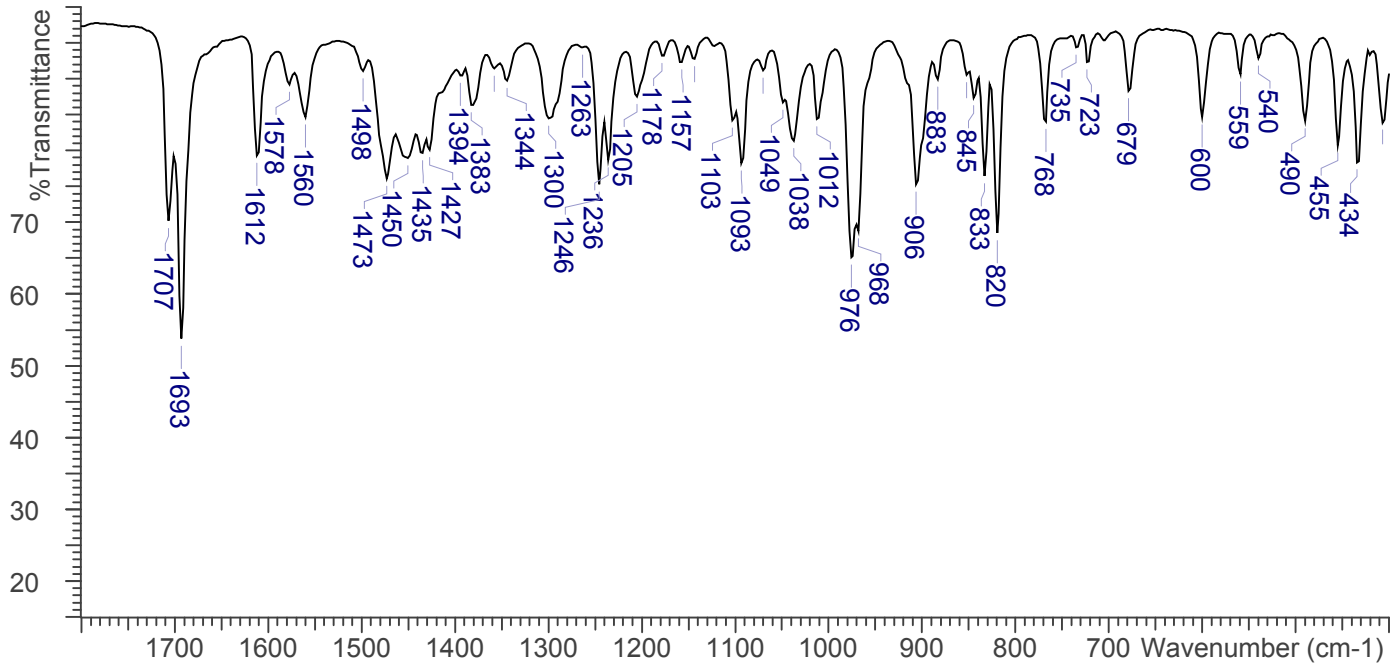


2,4-Dimethylmethcathinone



The Drug Enforcement Administration's Special Testing and Research Laboratory generated this monograph using structurally confirmed reference material.

FTIR, ATR (Diamond, 3 Bounce) 2,4-Dimethylmethcathinone HCl Lot N17-P92A



4. ADDITIONAL RESOURCES

No additional references as of 12/2013