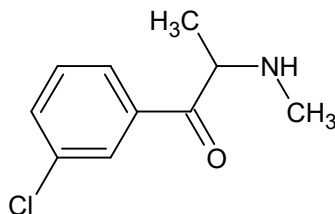




## 3-Chloromethcathinone

The Drug Enforcement Administration's Special Testing and Research Laboratory generated this monograph using structurally confirmed reference material.



### 1. GENERAL INFORMATION

<b>IUPAC Name:</b>	1-(3-chlorophenyl)-2-(methylamino)propan-1-one
<b>CAS#:</b>	1607439-32-6 (HCl)
<b>Synonyms:</b>	3-CMC; meta-chloro-N-methyl-cathinone; meta-chloromethcathinone
<b>Source:</b>	DEA Reference Material Collection
<b>Appearance:</b>	White powder (HCl)
<b>UV<sub>max</sub>(nm):</b>	Not determined

### 2. CHEMICAL AND PHYSICAL DATA

#### 2.1 CHEMICAL DATA

Form	Chemical Formula	Molecular Weight	Melting Point (°C)
Base	C <sub>10</sub> H <sub>12</sub> ClNO	197.66	Not Determined
HCl	C <sub>10</sub> H <sub>12</sub> ClNO HCl	234.12	198.3







# 3-Chloromethcathinone

The Drug Enforcement Administration's Special Testing and Research Laboratory generated this monograph using structurally confirmed reference material.

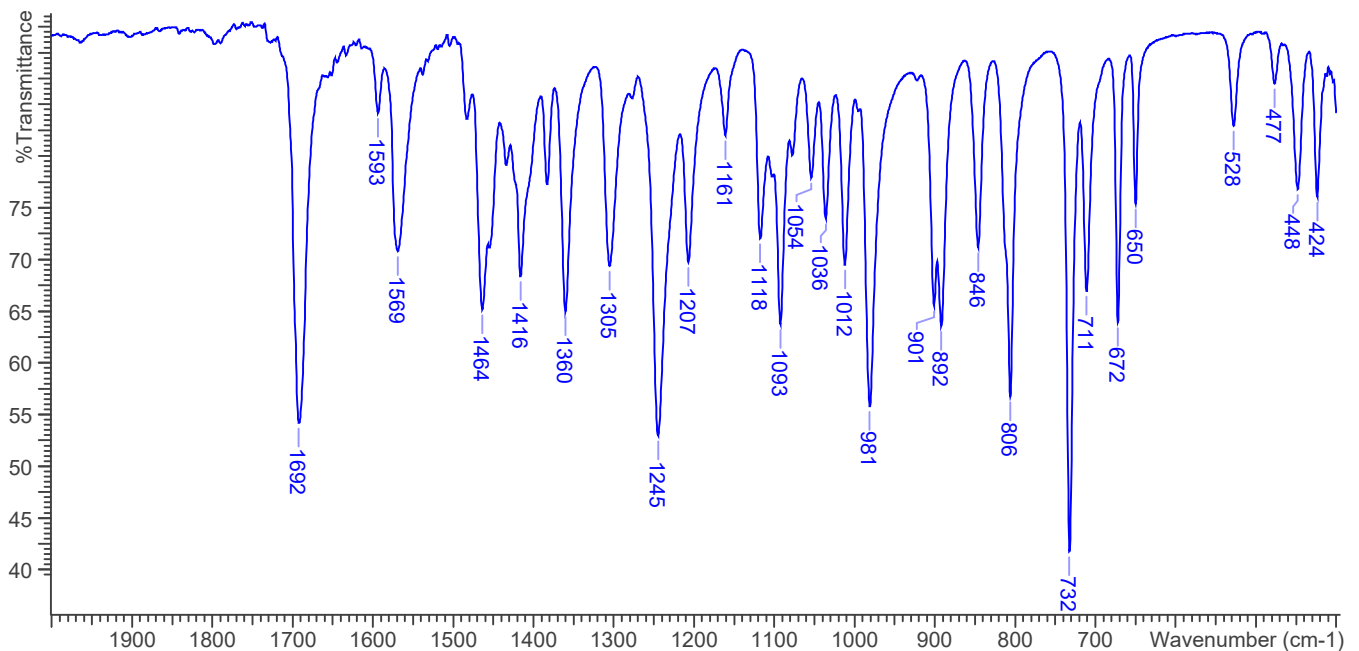
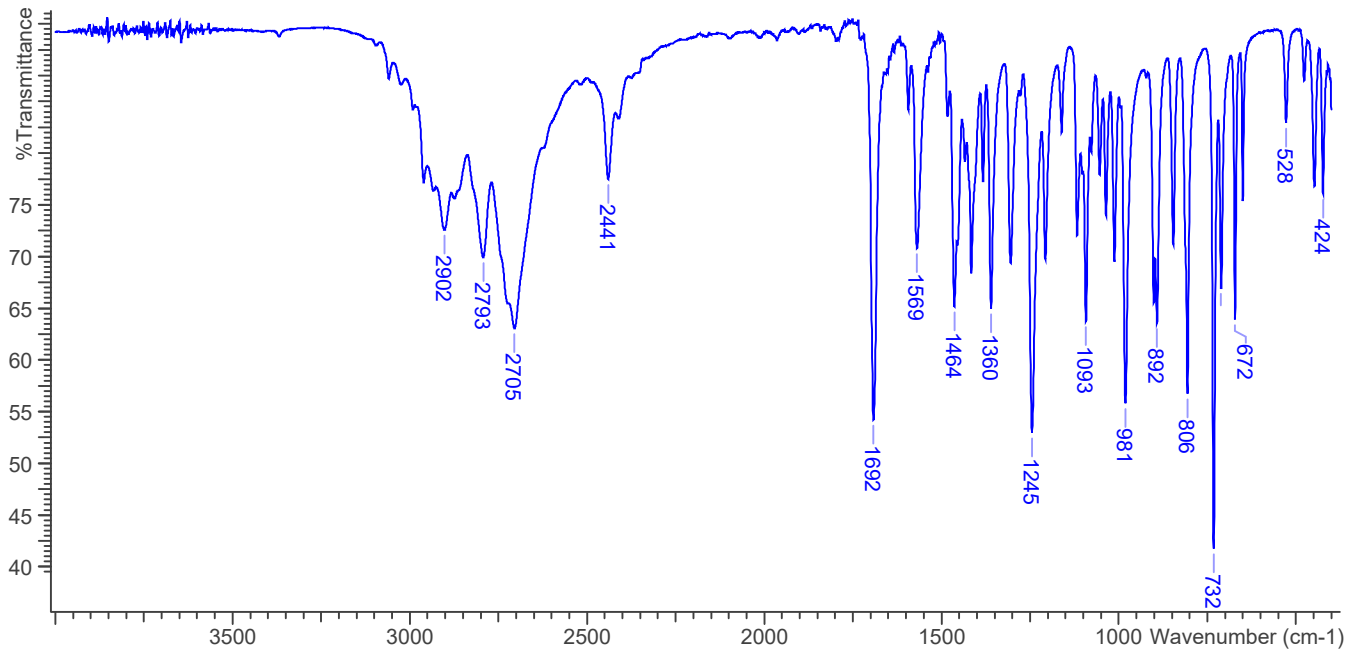


## 3.3 INFRARED SPECTROSCOPY (FTIR)

**Instrument:** FTIR with diamond ATR attachment (1 bounce)

**Scan Parameters:**  
Number of scans: 32  
Number of background scans: 32  
Resolution: 4 cm<sup>-1</sup>  
Sample gain: 1  
Aperture: 150

FTIR ATR (Diamond 1 Bounce): 3-Chloromethcathinone HCl; Lot# 0467004-25





## 3-Chloromethcathinone

*The Drug Enforcement Administration's Special Testing and Research Laboratory generated this monograph using structurally confirmed reference material.*



### 4. ADDITIONAL RESOURCES

No additional resources as of 10/2016