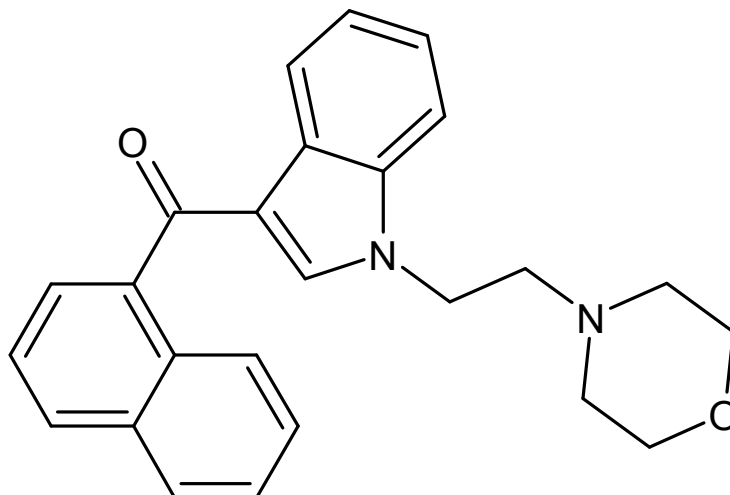




JWH-200

The Drug Enforcement Administration's Special Testing and Research Laboratory generated this monograph using structurally confirmed reference material.



1. GENERAL INFORMATION

IUPAC Name: 1-[2-(4-morpholinyl)ethyl]-3-(1-naphthoyl)indole

CAS#: 103610-04-4

Synonyms: WIN 55,225

Source: DEA Reference Material Collection

Appearance: Whitepowder

UV_{max}(nm): 218.1, 311.5

2. CHEMICAL AND PHYSICAL DATA

2.1 CHEMICAL DATA

Form	Chemical Formula	Molecular Weight	Melting Point (°C)
Base	C ₂₅ H ₂₄ N ₂ O ₂	384	Not Determined



JWH-200

The Drug Enforcement Administration's Special Testing and Research Laboratory generated this monograph using structurally confirmed reference material.



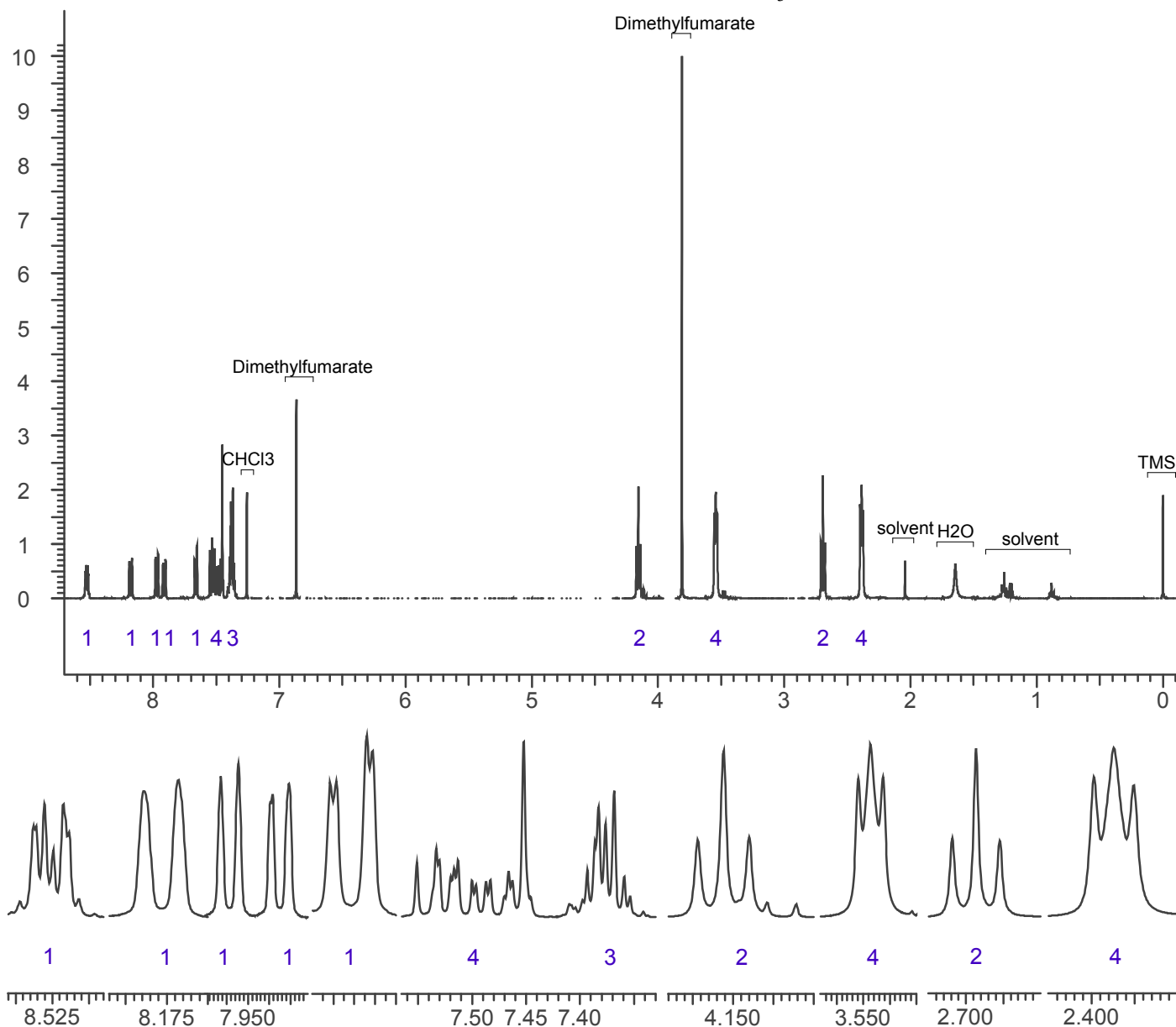
3. QUALITATIVE DATA

3.1 NUCLEAR MAGNETIC RESONANCE

Sample Preparation: Dilute analyte to ~20 mg/mL in CDCl₃ containing TMS for 0 ppm reference and dimethylfumarate as quantitative internal standard.

Instrument: 400 MHz NMR spectrometer
Parameters: Spectral width: at least containing -3 ppm through 13 ppm
Pulse angle: 90°
Delay between pulses: 45 seconds

¹H NMR: JWH-200 Lot # 0424688-3; CDCl₃; 400MHz





JWH-200



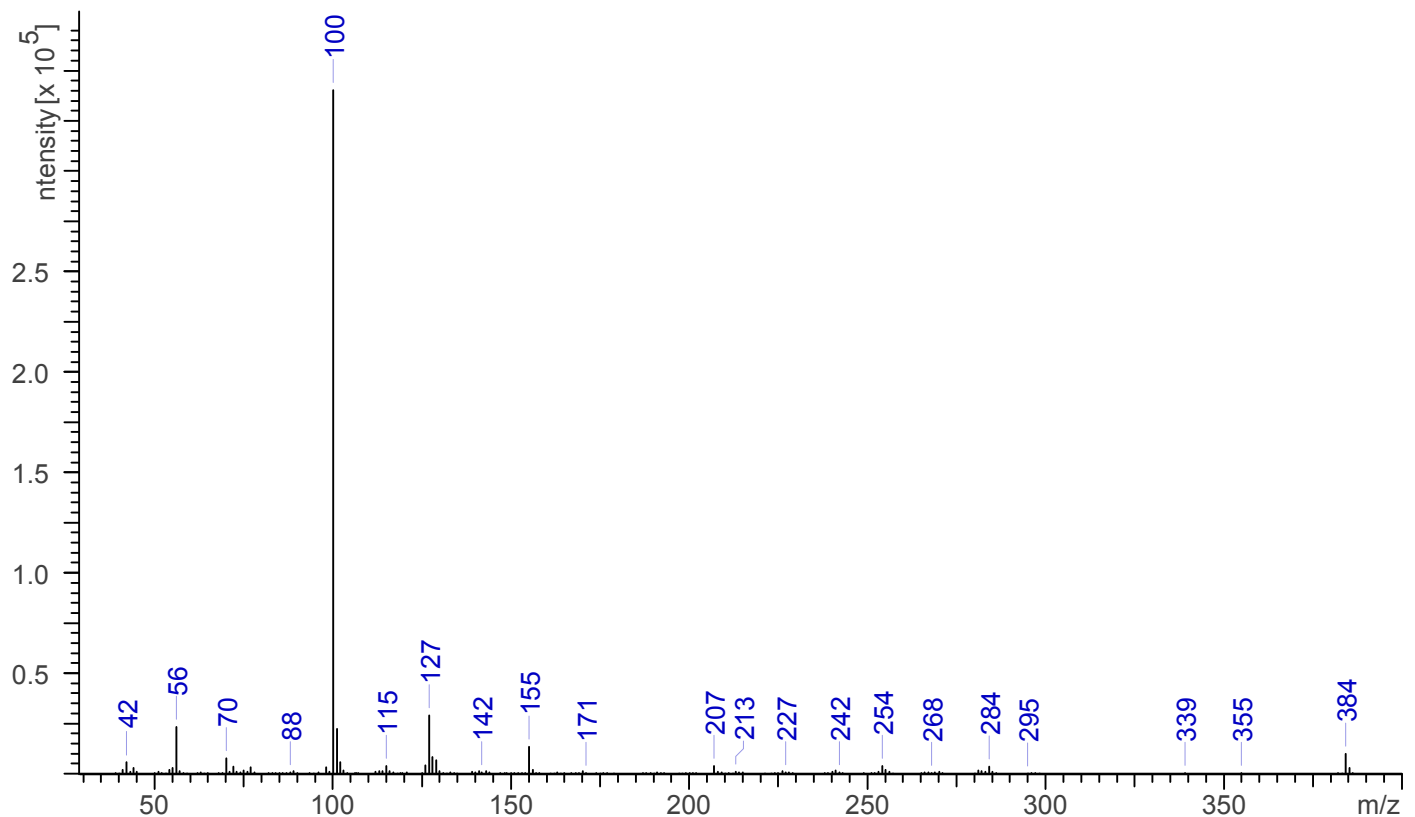
The Drug Enforcement Administration's Special Testing and Research Laboratory generated this monograph using structurally confirmed reference material.

3.2 GAS CHROMATOGRAPHY/MASS SPECTROMETRY

Sample Preparation: Dilute analyte ~2 mg/mL in chloroform.

Instrument: Agilent gas chromatograph operated in split mode with MS detector
Column: DB-1 MS (or equivalent); 30m x 0.25 mm x 0.25 μ m
Carrier Gas: Helium at 1 mL/min
Temperatures: Injector: 280°C
MSD transfer line: 280°C
MS Source: 230°C
MS Quad: 150°C
Oven program:
1) 100°C initial temperature for 1.0 min
2) Ramp to 300°C at 12 °C/min
3) Hold final temperature for 9.0 min
Injection Parameters: Split Ratio = 20:1, 1 μ L injected
MS Parameters: Mass scan range: 30-550 amu
Threshold: 100
Tune file: stune.u
Acquisition mode: scan
Retention Time: 34.083 min

EI Mass Spectrum: JWH-200 Lot # 0424688-3





JWH-200

The Drug Enforcement Administration's Special Testing and Research Laboratory generated this monograph using structurally confirmed reference material.

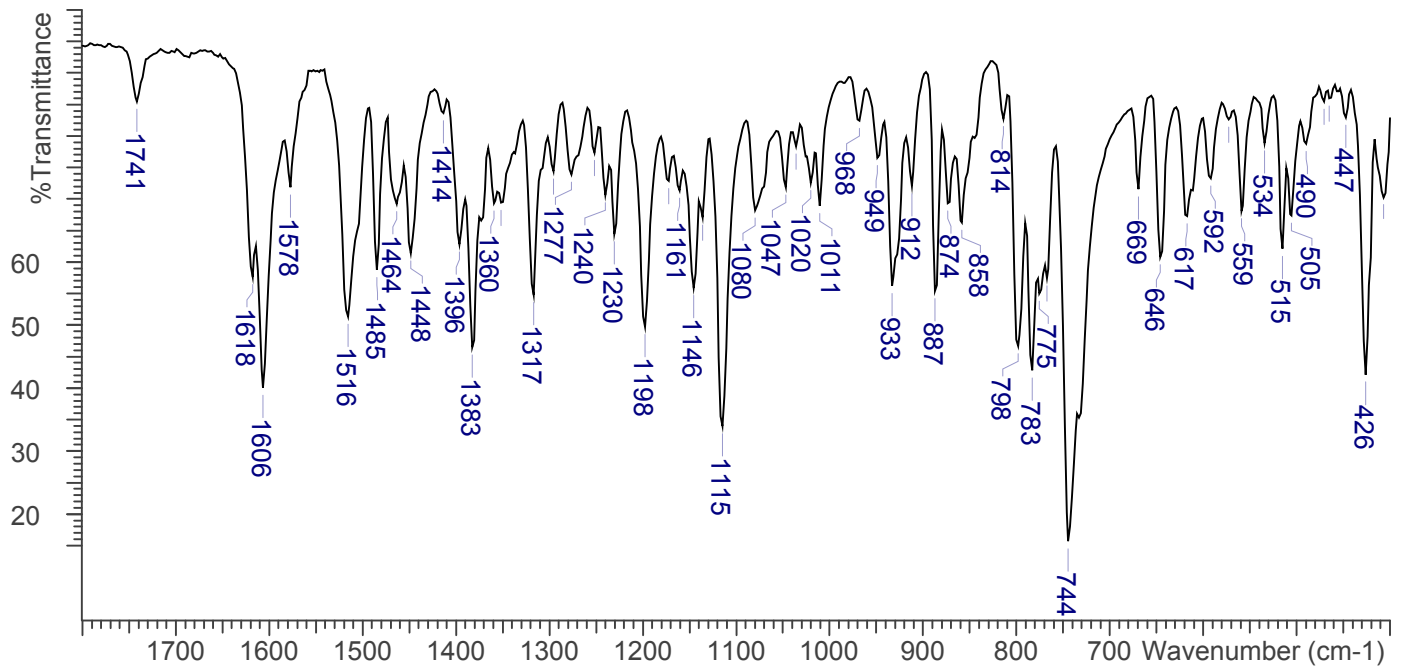
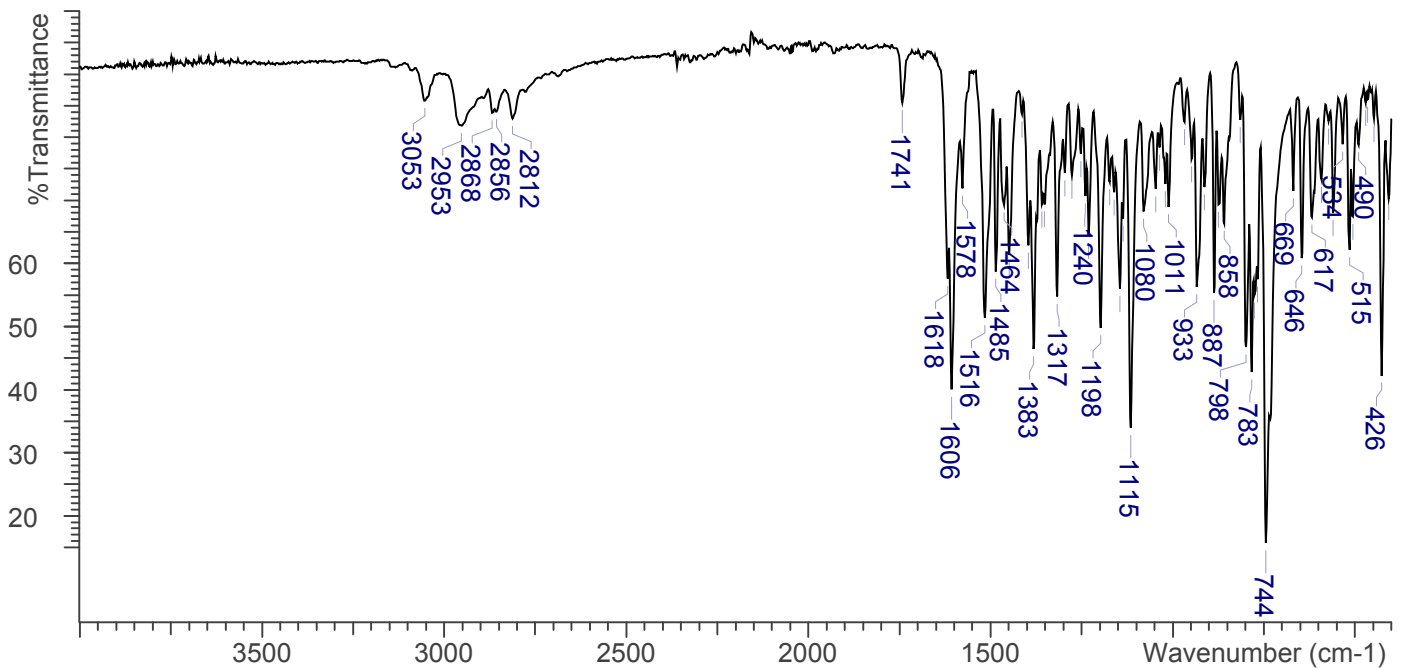


3.3 INFRARED SPECTROSCOPY (FTIR)

Instrument: FTIR with diamond ATR attachment (3 bounce)

Scan Parameters:
Number of scans: 32
Number of background scans: 32
Resolution: 4 cm⁻¹
Sample gain: 8
Aperture: 150

FTIR ATR (Diamond, 3 Bounce): JWH-200 Lot # 0424688-3





JWH-200

The Drug Enforcement Administration's Special Testing and Research Laboratory generated this monograph using structurally confirmed reference material.



4. ADDITIONAL RESOURCES

[Forendex](#)

[Wikipedia](#)