







# $\beta'$ -Phenyl fentanyl



The Drug Enforcement Administration's Special Testing and Research Laboratory generated this monograph using structurally confirmed reference material.

## 3.2 GAS CHROMATOGRAPHY/MASS SPECTROMETRY

*Sample Preparation:* Dilute analyte ~4 mg/mL in MeOH

**Instrument:** Agilent gas chromatograph operated in split mode with MS detector

**Column:** HP-5 MS (or equivalent); 30m x 0.25 mm x 0.25  $\mu$ m

**Carrier Gas:** Helium at 1.5 mL/min

**Temperatures:** Injector: 280°C                      MSD transfer line: 280°C

MS Source: 230°C                      MS Quad: 150°C

Oven program:

1) 100°C initial temperature for 1.0 min

2) Ramp to 280°C at 12 °C/min

3) Hold final temperature for 30.0 min

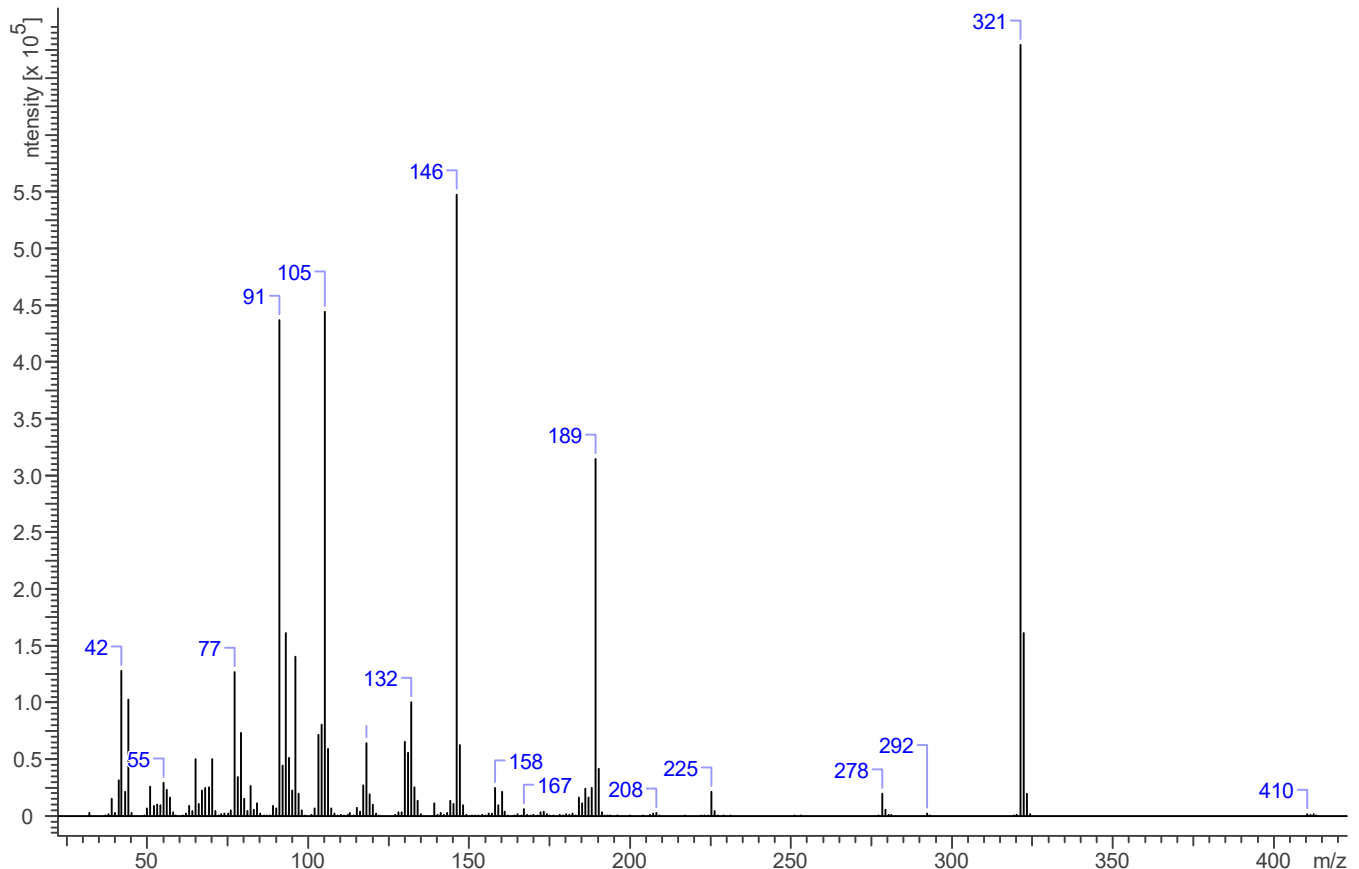
**Injection Parameters:** Split Ratio = 25:1, 1  $\mu$ L injected

**MS Parameters:** Mass scan range: 30-550 amu                      Threshold: 150

Tune file: stune.u                      Acquisition mode: scan

**Retention Time:** 26.3 min

EI Mass Spectrum:  $\beta'$ -Phenyl fentanyl; LOT # 0519541-4





# $\beta'$ -Phenyl fentanyl

The Drug Enforcement Administration's Special Testing and Research Laboratory generated this monograph using structurally confirmed reference material.



## 3.3 INFRARED SPECTROSCOPY (FTIR)

**Instrument:** FTIR with diamond ATR attachment (1 bounce)  
**Scan Parameters:** Number of scans: 32  
Number of background scans: 32  
Resolution: 4 cm<sup>-1</sup>  
Sample gain: 1  
Aperture: 150

FTIR ATR (Diamond 1 Bounce):  $\beta'$ -Phenyl fentanyl; LOT # 0519541-4

