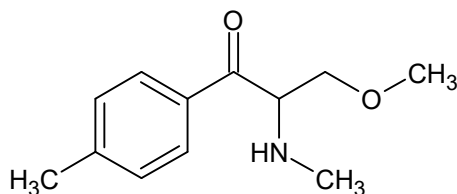




Mexedrone

The Drug Enforcement Administration's Special Testing and Research Laboratory generated this monograph using structurally confirmed reference material.



1. GENERAL INFORMATION

IUPAC Name: 3-methoxy-2-(methylamino)-1-(4-methylphenyl)propan-1-one

CAS#: NA

Synonyms: NA

Source: DEA Reference Material Collection

Appearance: White Powder (HCl)

UV_{max}(nm): Not determined

2. CHEMICAL AND PHYSICAL DATA

2.1 CHEMICAL DATA

Form	Chemical Formula	Molecular Weight	Melting Point (°C)
Base	C ₁₂ H ₁₇ NO ₂	207	Not Determined
HCl	C ₁₂ H ₁₇ NO ₂ HCl	243	193.0-194.1



Mexedrone

The Drug Enforcement Administration's Special Testing and Research Laboratory generated this monograph using structurally confirmed reference material.



3. QUALITATIVE DATA

3.1 NUCLEAR MAGNETIC RESONANCE

Sample Preparation: Dilute analyte to ~26 mg/mL in D₂O containing TSP for 0 ppm reference and maleic acid as quantitative internal standard.

Instrument: 400 MHz NMR spectrometer
Parameters: Spectral width: at least containing -3 ppm through 13 ppm
Pulse angle: 90°
Delay between pulses: 45 seconds

¹HNMR: Mexedrone HCl; Lot# RM-160203-01; D₂O; 400MHz

