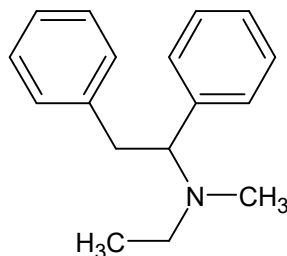




N-ethyl-N-methyl-1,2-diphenylethanamine

The Drug Enforcement Administration's Special Testing and Research Laboratory generated this monograph using structurally confirmed reference material.



1. GENERAL INFORMATION

IUPAC Name: N-ethyl-N-methyl-1,2-diphenylethan-1-amine

CAS#: N/A

Synonyms: N/A

Source: DEA Reference Material Collection

Appearance: White powder

UV_{max}(nm): Not determined

2. CHEMICAL AND PHYSICAL DATA

2.1 CHEMICAL DATA

Form	Chemical Formula	Molecular Weight	Melting Point (°C)
Base	C ₁₇ H ₂₁ N	239.36	Not Determined
HCl	C ₁₇ H ₂₁ N HCl	275.82	Not Determined



N-ethyl-N-methyl-1,2-diphenylethanamine

The Drug Enforcement Administration's Special Testing and Research Laboratory generated this monograph using structurally confirmed reference material.



3.3 INFRARED SPECTROSCOPY (FTIR)

Instrument: FTIR with diamond ATR attachment (1 bounce)
Scan Parameters: Number of scans: 32
Number of background scans: 32
Resolution: 4 cm⁻¹
Sample gain: 4
Aperture: 80

FTIR ATR (Diamond 1 Bounce): *N*-ethyl-*N*-methyl-1,2-diphenylethanamine HCl; LOT # RM-160623-01

