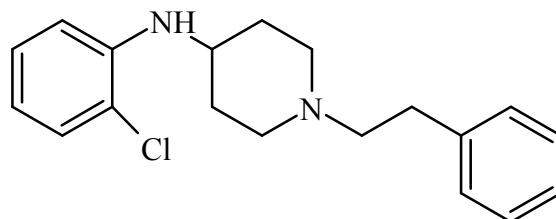




Despropionyl ortho-Chlorofentanyl

The Drug Enforcement Administration's Special Testing and Research Laboratory generated this monograph using structurally confirmed reference material.



1. GENERAL INFORMATION

IUPAC Name: *N*-(2-chlorophenyl)-1-phenethylpiperidin-4-amine

CAS#: NA

Synonyms: ortho-chloro 4-ANPP, o-chloro 4-ANPP, Despropionyl o-Cl, Despropionyl o-Chlorofentanyl, Despropionyl ortho-Cl, *N*-(2-chlorophenyl)-1-(2-phenylethyl)piperidin-4-amine, *N*-(2-chlorophenyl)-1-(2-phenylethyl)-4-piperidin-amine

Source: DEA Reference Material Collection

Appearance: white powder

UV_{max}(nm): NA

2. CHEMICAL AND PHYSICAL DATA

2.1 CHEMICAL DATA

Form	Chemical Formula	Molecular Weight	Melting Point (°C)
Base	C ₁₉ H ₂₃ ClN ₂	314.85	NA
HCl	C ₁₉ H ₂₃ ClN ₂ · HCl	351.32	NA



Despropionyl ortho-Chlorofentanyl

The Drug Enforcement Administration's Special Testing and Research Laboratory generated this monograph using structurally confirmed reference material.



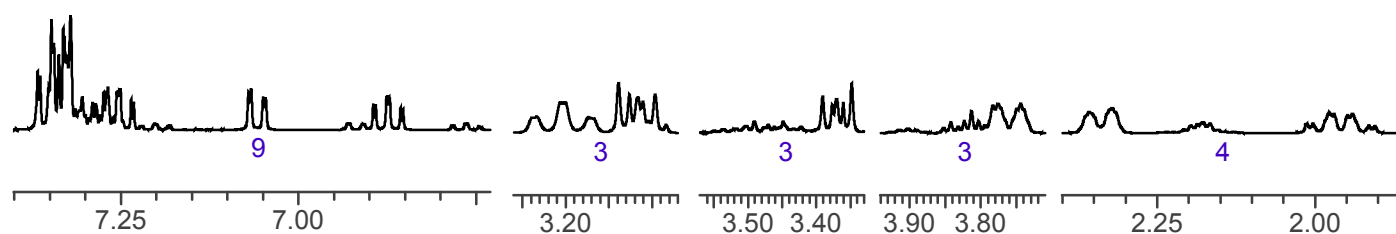
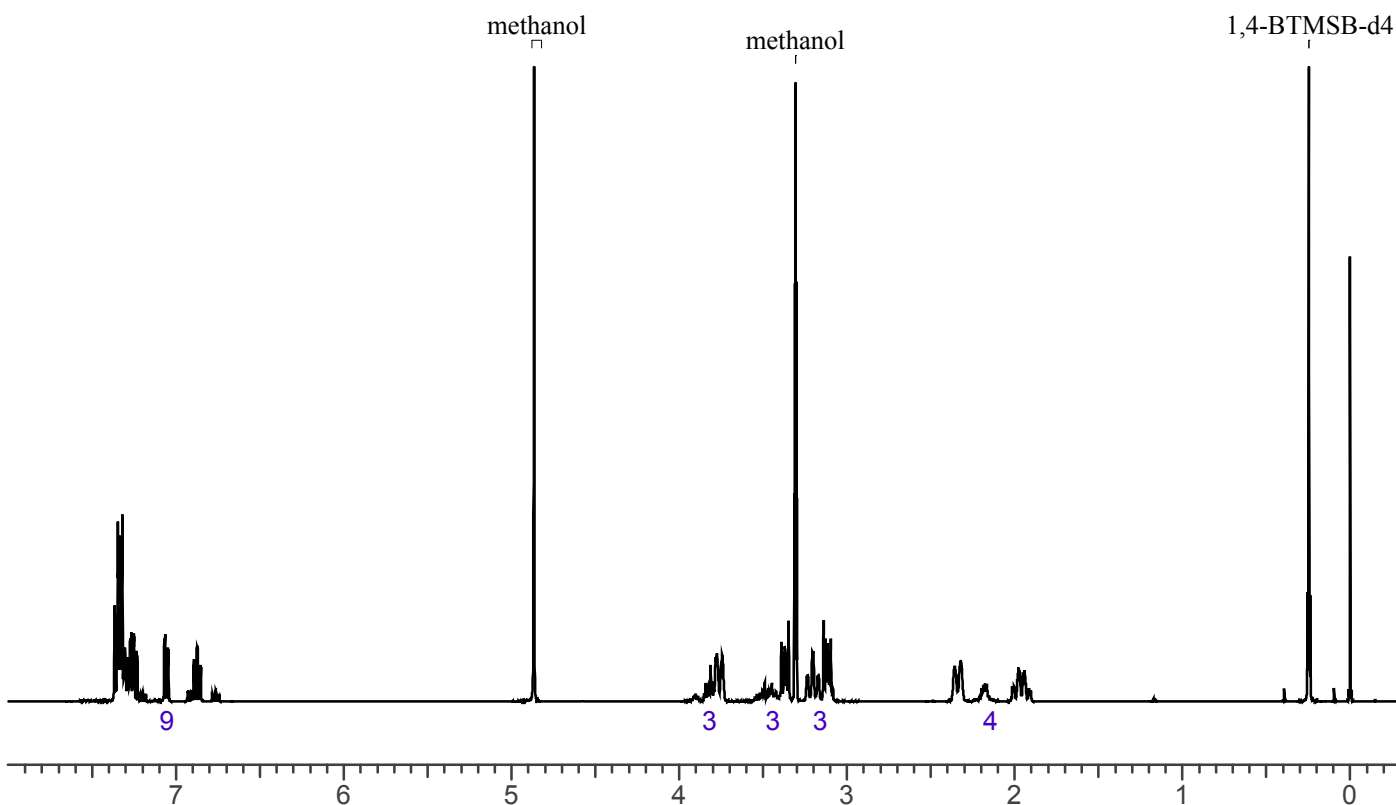
3. QUALITATIVE DATA

3.1 NUCLEAR MAGNETIC RESONANCE

Sample Preparation: Dilute analyte to ~11 mg/mL in CD₃OD containing TMS for 0 ppm reference and 1,4-BTMSB-d₄ as quantitative internal standard.

Instrument: 400 MHz NMR spectrometer
Parameters: Spectral width: at least containing -3 ppm through 13 ppm
Pulse angle: 90°
Delay between pulses: 45 seconds

¹HNMR: Despropionyl ortho-Chlorofentanyl HCl Hydrate; Lot# 0600282-8; CD₃OD; 400 MHz





Despropionyl ortho-Chlorofentanyl

The Drug Enforcement Administration's Special Testing and Research Laboratory generated this monograph using structurally confirmed reference material.



3.2 GAS CHROMATOGRAPHY/MASS SPECTROMETRY

Sample Preparation: Dilute analyte ~4 mg/mL into methanol.

Instrument: Agilent gas chromatograph operated in split mode with MS detector
Column: HP-5; 30m x 0.25 mm x 0.25 μ m
Carrier Gas: Helium at 1.5mL/min
Temperatures: Injector: 280°C

MSD transfer line: 280°C

MS Source: 230°C

MS Quad: 150°C

Oven program:

1) 100°C initial temperature for 1.0 min

2) Ramp to 280°C at 12 °C/min

3) Hold final temperature for 9.0 min

Injection Parameters: Split Ratio = 25:1, 1 μ L injected

MS Parameters: Mass scan range: 30-550 amu

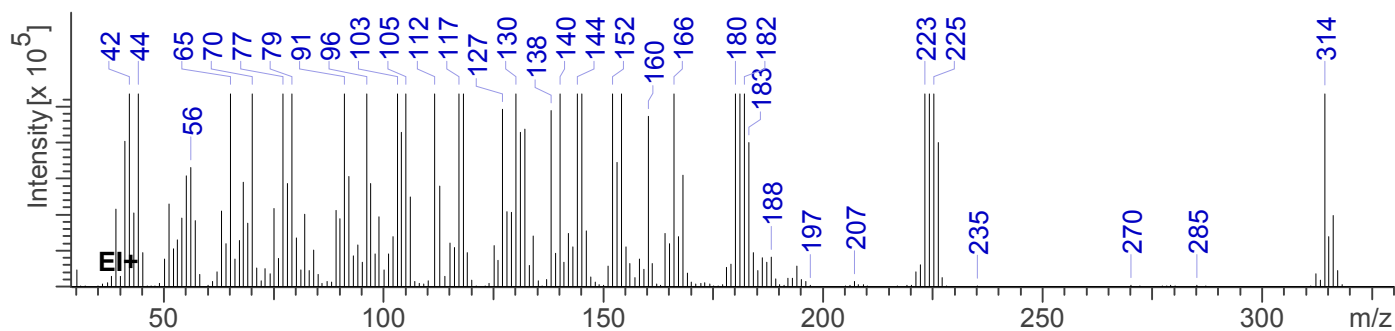
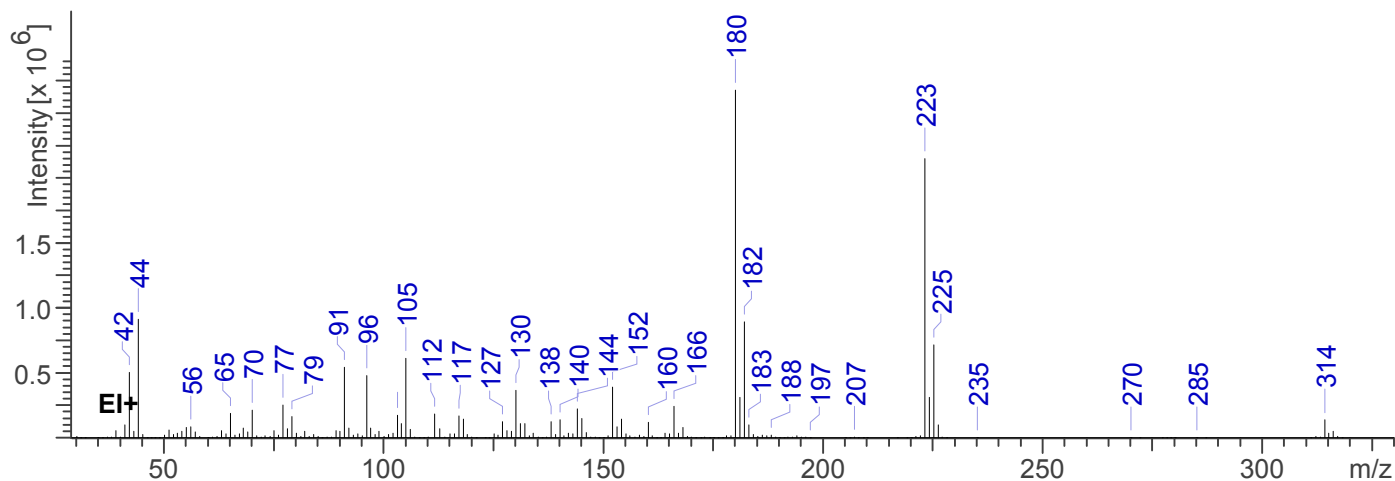
Threshold: 100

Tune file: stune.u

Acquisition mode: scan

Retention Time: 15.521min

EI Mass Spectrum: Despropionyl ortho-Chlorofentanyl HCl Hydrate; Lot# 0600282-8





Despropionyl ortho-Chlorofentanyl

The Drug Enforcement Administration's Special Testing and Research Laboratory generated this monograph using structurally confirmed reference material.

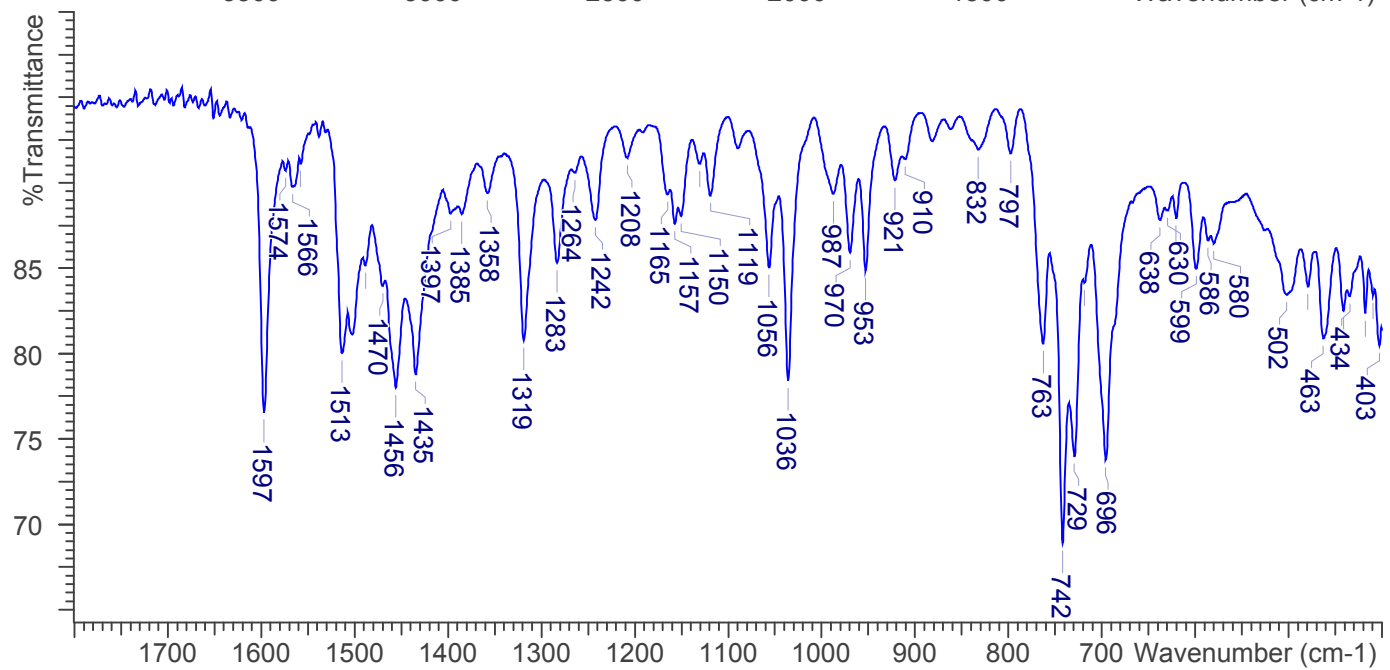
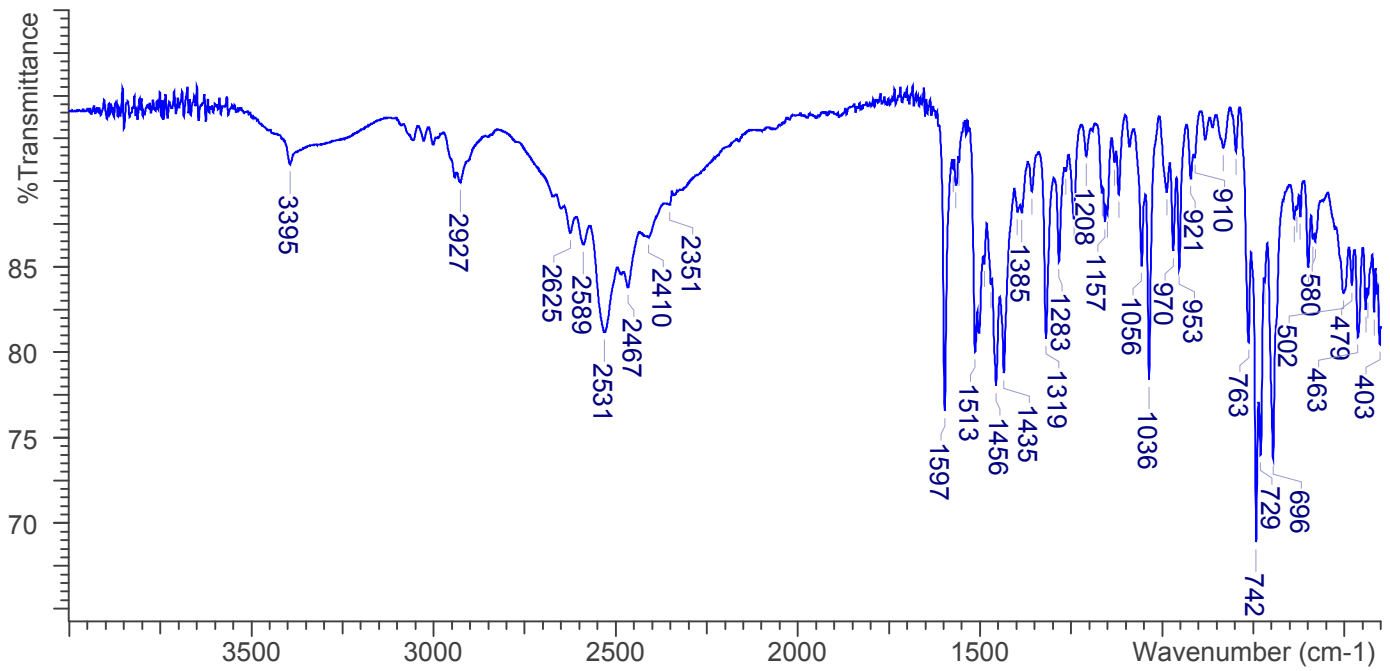


3.3 INFRARED SPECTROSCOPY (FTIR)

Instrument: FTIR with diamond ATR attachment (1 bounce)

Scan Parameters:
Number of scans: 32
Number of background scans: 32
Resolution: 4 cm⁻¹
Sample gain: 4
Aperture: 150

FTIR ATR (Diamond 1 Bounce): Despropionyl ortho-Chlorofentanyl HCl Hydrate; Lot# 0600282-8





Despropionyl ortho-Chlorofentanyl

The Drug Enforcement Administration's Special Testing and Research Laboratory generated this monograph using structurally confirmed reference material.



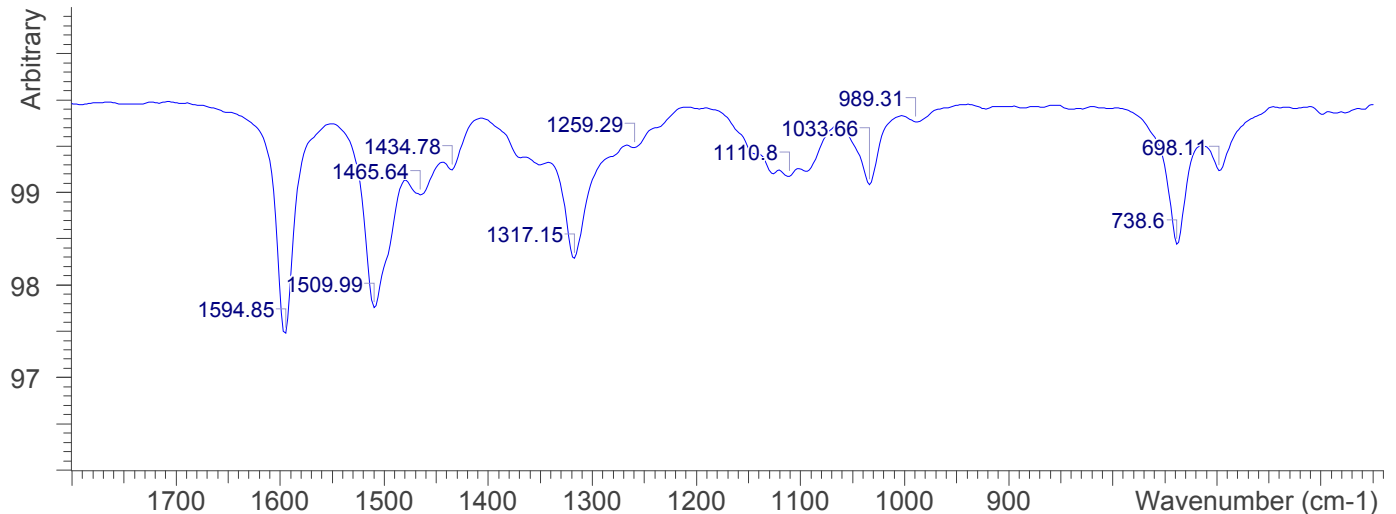
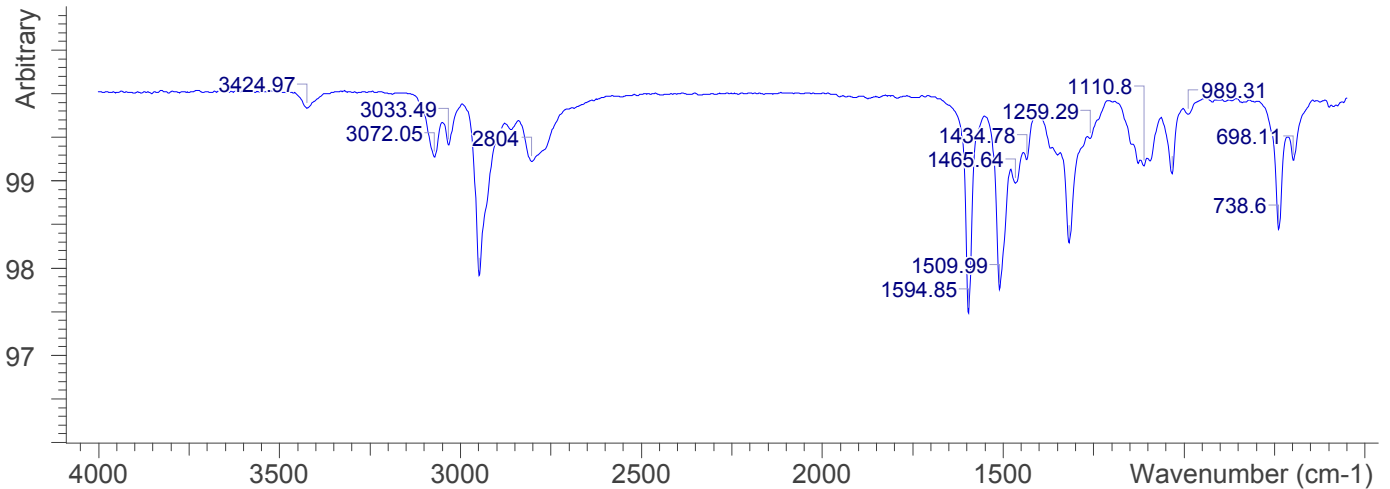
3.4. GAS CHROMATOGRAPHY /INFRARED DETECTION:

Sample Preparation: Dilute analyte 1mg/ml in CHCl_3

Instrument: Gas Chromatograph in split mode with Infrared Detection
Column: HP-5; 30m x 0.32 mm id x 0.25 μm
Carrier Gas: Helium at 2.0mL/min
Temperature: Injector: 280°C Split ratio: 2:1, 2 μl injection
65°C hold 0.5min., ramp to 310°C at 20°C/min., hold 5min.

IRD: Detector: Transfer line
Temp 280°C
Flow Cell Temp 280°C
Resolution 8 cm^{-1}

GC-IRD: Despropionyl ortho-Chlorofentanyl HCl Hydrate; Lot# 0600282-8





Despropionyl ortho-Chlorofentanyl

The Drug Enforcement Administration's Special Testing and Research Laboratory generated this monograph using structurally confirmed reference material.



4. ADDITIONAL RESOURCES

No additional resources as of 08/05/2021